

Pentalift Pentaloader

The Ultimate Economical and
Ergonomic Palletizing Tool



THE PROBLEM:



THE RESULT:



THE SOLUTION:



PENTALOADER

The Pentaloader will:

- * Increase efficiency
- * Reduce costs
- * Increase profits

Pentalift's Pentaloader is the ultimate device for maximizing both efficiency and safety in palletizing / positioning applications. The Pentaloader is a pallet or work positioner which automatically adjusts to keep the height of the load at a more ergonomically correct position as weight is added or removed. The Pentaloader has a manual rotating top which allows the pallet on the Pentaloader to be rotated for easy and efficient, near-side loading.

The Pentaloader is a unique product due to the engineering behind its compression spring operating mechanism. The Pentaloader does not operate using compressed and contained air. Air operation systems are prone to leakage and require regular refilling for load adjustment.

The Pentaloader uses a pack of five springs. The load handling capacity of the Pentaloader is easily adjusted to suit the application. The operator simply inserts or removes a "U" pin to engage or disengage up to three of the springs in the Pentaloader's five spring pack. This simple fingertip adjustment is different from the spring designs in competitive units. Other designs typically require the complete removal or addition of springs for load adjustment; changes which add cost due to longer setups and lost time.

The Pentaloader has a quick return on investment due to its economical purchase price.

The Pentaloader does not require any electrical, hydraulic or pneumatic hook ups which means additional installation costs are avoided.

A Pentaloader installation consistently contributes to bottom line profitability due to time savings, improved workplace safety, and the efficiencies that result from ergonomic improvements to palletizing operations.

DESIGN EXCELLENCE

Pentalift Equipment Corporation is the recognized industry leader in positioning solutions.

The Pentaloader is another example of Pentalift's engineering and design philosophy ...

"Simplicity is the ultimate sophistication".

Pentalift's Pentaloader is the result of extensive design investigation, consideration and testing. The Pentaloader has been thoughtfully engineered to be an extremely effective and reliable solution for palletizing / positioning operations. Pentalift confidently invites comparison of the Pentaloader to any other palletizing / positioning unit.



PENTALIFT PENTALOADER DESIGN FEATURES

Rotating Top: The Pentaloader features a solid steel, one-piece rotating top assembly with four corner guards. The corner guards not only prevent the removal of a pallet when the Pentaloader is in the lowered position, they also ensure accurate pallet positioning and lessen the likelihood of off-centre loading.



Safety: Each of the five double spring sets encases an independent guide shaft which holds the spring in the unlikely event of a spring break. This design feature also ensures that even with a broken spring, the Pentaloader will bear the load and prevent a dangerous free fall of the load. The Pentaloader's unique five spring pack is unlike the air bag system common in other designs. Should a fork truck puncture an air bag, the air bag table would instantly drop.

CONSTRUCTION FEATURES

Rotating Top: The top is fabricated from 3/8" thick solid steel plate. The top rotates a full 360°. The centre pivot of the Pentaloader features a heavy duty central thrust bearing. Supporting the top are four load bearing steel rollers. Each of these rollers is bearing equipped to ensure long, trouble-free and easy operation. A countersunk centre bolt secures the top to the Pentaloader's top frame, to prevent the accidental lifting and removal of the top.

Scissor Legs: Each of the Pentaloader's lifting legs is precision cut from one piece of high tensile, ASTM, A572, 45,000 PSI yield steel plate. The design profile of the legs has been engineered to provide both optimal support strength and maximum deck rigidity.

Load Handling Adjustment: Adjusting the Pentaloader's load handling capacity to suit the application is easy. Four incremental settings are possible. By simply inserting or removing one, two or three of the "U" pins, the Pentaloader can be quickly setup to handle the specific load. The Pentaloader's springs never need to be changed. No air or air pressure adjustment is needed. Air bladder designs have numerous air connections, creating the potential for leaks and the subsequent requirement for the continual refilling of the air system.



Spring Cam Arrangement: The patented design of the Pentaloader has its five spring pack acting in a linear fashion. This facilitates the automatic adjustment of the Pentaloader to the ergonomically correct height as the weight of the load changes.

Spring Torque Equalization Bar: This design feature ensures that the spring thrust bar is always precisely aligned to equalize the spring pack forces should the individual springs not be exactly identical.

Pivot Points: Pivot points are precision-reamed for accurate alignment and inspected to ensure conformance to the engineering design specifications. Precision-turned, ground, polished and chromed pins as well as lubricated-for-life bearings are used at all pivot points to ensure maintenance-free, reliable operation.

Decals: Highly visible, detailed safety and operation decals are in place to promote safe operating procedures.

PENTALOADER OPTIONS



Accordion Skirting

Accordion safety skirting protects workers from potential pinch points and minimizes the entry of debris under the Pentaloader.



Brake (For Rotating Top)

The brake locks the rotating top in the desired position during use and when positioning or removing the loaded/unloaded pallet.



Semi Portable

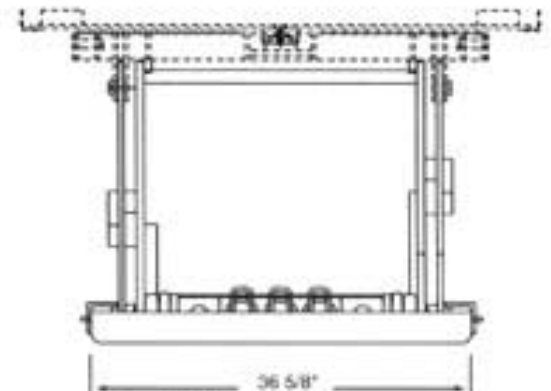
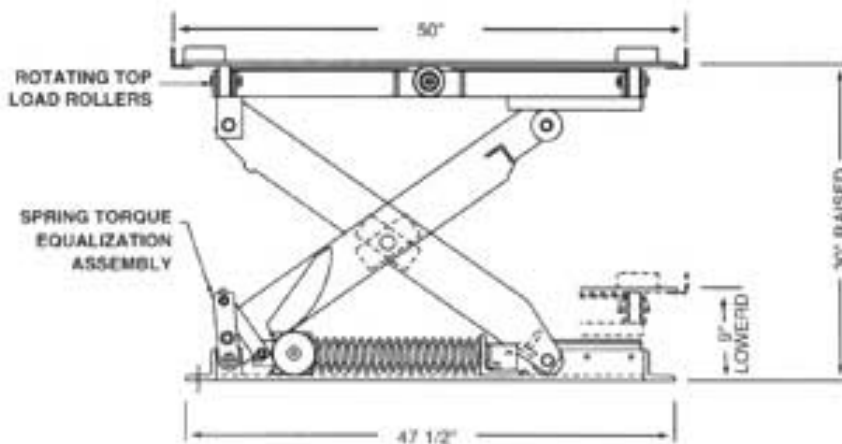
Frame-mounted rollers and a removable dolly handle allow easy relocation of the Pentaloader. *(Table not to be moved when loaded).*



Oversize top (deck)

Top has up to 52" clearance between corner guards.

PENTALOADER SPECIFICATIONS:



Low height = 9"
Full Travel = 21"
Raised Height = 30"

The Pentalift Pentaloader design is patented.

PENTALOADER MODELS:

There are four (4) Pentaloader models - XPL1, XPL2, PL1 and PL2. Each of these Pentaloader models has four (4) settings to facilitate the handling of a wide range of applications.

Note: All models are built with components engineered for a maximum load of 4500 lb.

DISTRIBUTED BY:

PENTALIFT EQUIPMENT CORPORATION

P.O. Box 1510 Buffalo NY USA 14240-1510
P.O. Box 1060 Guelph ON Canada N1H 6N1
C.P. 1219 Pointe-Claire QC Canada H9S 5K7
Website: www.pentalift.com

Phone: (519) 763-3625 Fax (519) 763-2894
Phone: (519) 763-3625 Fax (519) 763-2894
Phone: (514) 426-0219 Fax (514) 426-2140
e-mail: lifts@pentalift.com