

# Conventional Dock Seals and Truck Shelters



## Pentlift Dock Seals

serve to form a gasket between the building and truck/trailer. They are an effective seal for loading docks servicing a relatively standard fleet of trucks/trailers.



## Pentlift Truck Shelters

provide an effective seal for a wide range of trucks/trailers. Truck shelters allow for full, unobstructed access to the rear of the trailer. Since no compression is required to form a seal, pressure on the exterior building wall is minimized.

## Coverings and Colors\*

Materials	Black	Blue	Brown	Green	Gray
22 oz Vinyl	■	■	■	■	■
32 oz Vinyl	■	■	■	■	■
40 oz Vinyl	■	■	■	■	■
16 oz Hypalon	■	■	■	■	■
40 oz Hypalon	■	■	■	■	■
Pentalon I †	■	■	■	■	■
Pentalon II ‡	■	■	■	■	■

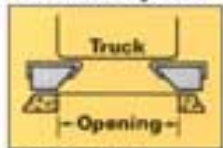
\*Other colors available by special order.

**Pentalon Fabrics** are manufactured to meet Pentlift's stringent standards for quality and performance.

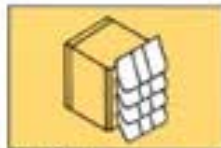
† **Pentalon I** is a heavy weight, high performance alloy material with an exceptionally high tear resistance that exceeds any conventional fabric used in the dock seal industry. A higher ratio of coating on the outside improves abrasion resistance and wearability by putting the extra coating on the face of the dock seal where most of the wear occurs.

‡ **Pentalon II** the ultimate truck shelter fabric, is an extra thick, highly wear resistant, unidirectional, 5 layer, high performance alloy material that has been developed specifically for Pentlift Truck Shelters. This unidirectional characteristic maintains a uniform seal without the need for stays or stiffeners which may deteriorate or fail over time. Pentalon II's superior characteristics as a truck shelter material also make it the fabric of choice when retrofitting existing truck shelters where other materials have failed.

## Common Options



Beveled Side Pads



Wear Pleats



Tapered Units



Metal Hood

# PS-100 Fixed Header Dock Seal

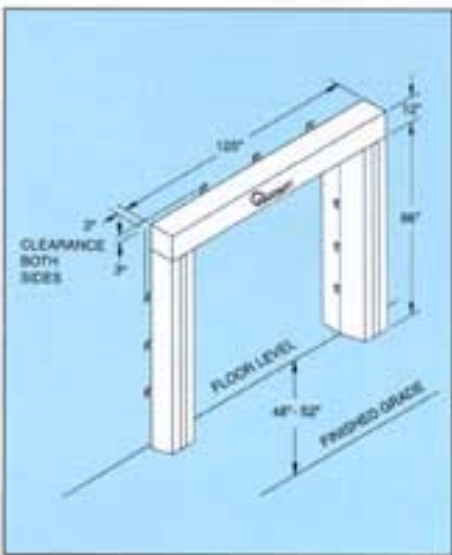


Suits door openings up to 9' wide x 9' high

## Features

The PS-100 Fixed Header dock seal is a compressible, foam-filled, 3 sided dock seal. It is best suited for a door opening that is 8' wide x 8' high / 8' wide x 9' high which services trucks/trailers of approximately the same size. Once the PS-100 dock seal is compressed, a gasket seal is formed between the rear of the truck/trailer and the building.

*NOTE: Consider a shelter (rigid or inflatable) or an L-shape dock seal for 9' wide door openings.*



## Specifications

Fixed Header dock seal(s) to be Model PS-100 as manufactured by Pentlift Equipment Corporation to suit a door opening of \_\_\_\_\_ wide x \_\_\_\_\_ high. Side pads and header seal to be constructed of polyurethane foam bonded to a 2" thick, kiln-dried wood backboard. Side pads to be \_\_\_\_\_ long and the header seal to be \_\_\_\_\_ wide, with a projection of \_\_\_\_\_. Cover to have bottom breathers. Cover fabric to be \_\_\_\_\_ with 4" wide, full-length, yellow guide stripes. Unit to be supplied complete with galvanized mounting hardware.

Options: Wear pleats  
Deep curtain  
Build-out box  
Common member

# PS-200A Adjustable Curtain Dock Seal

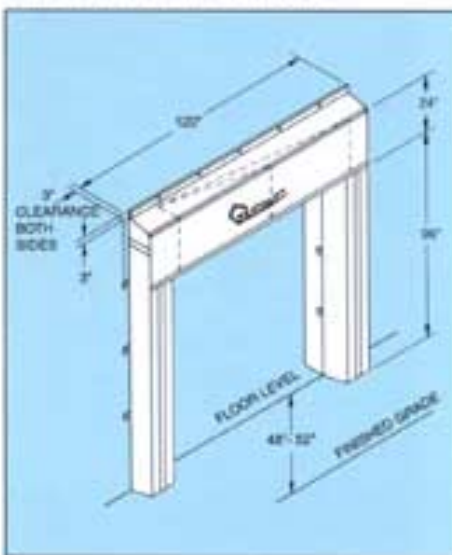


Suits door openings up to 9' wide x 10' high

## Features

The PS-200A Adjustable Curtain dock seal is an effective solution for dock doors which service trucks/trailers of varying heights. After the truck/trailer compresses the side pads, the dock attendant simply lowers the adjustable header curtain to the truck/trailer top, to form a three-sided seal around the rear of the trailer. The adjustable header curtain of the PS-200A minimizes the potential for header damage, which can occur with fixed curtain type dock seals due to impact from forklift truck masts or loads.

*NOTE: Consider a shelter (rigid or inflatable) or an L-shape dock seal for 9' wide door openings.*



## Specifications

Adjustable Curtain dock seal(s) to be Model PS-200A as manufactured by Pentlift Equipment Corporation to suit a door opening of \_\_\_\_\_ wide x \_\_\_\_\_ high. Side pads to be \_\_\_\_\_ long x \_\_\_\_\_ projection, constructed of polyurethane foam bonded to a 2" thick, kiln-dried wood backboard. Side pads to have bottom breathers. Adjustable head curtain shall be full width over side pads, secured to the wall and side pads. Head curtain adjustment to be accomplished with rope control. Adjustable Head curtain to be \_\_\_\_\_ wide, with \_\_\_\_\_ drop. Cover fabric to be \_\_\_\_\_ with 4" wide, full-length, yellow guide stripes. Unit to be supplied complete with galvanized mounting hardware.

Options: Wear pleats  
Pentairwing curtain  
Build-out box  
Common member

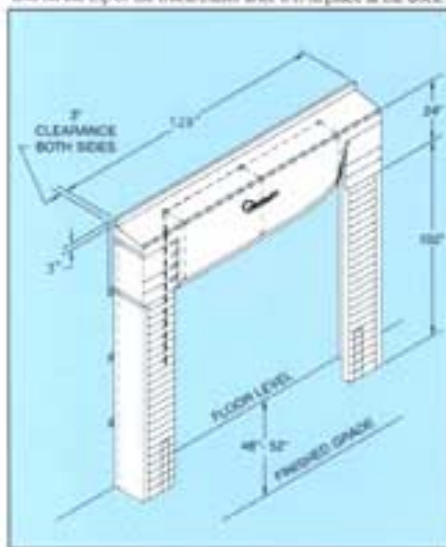
## PS-700 L-Shape Dock Seal



Suits door openings up to 10' wide x 10' high

### Features

The PS-700 L-Shape dock seal is an effective solution for larger door openings which service trucks/trailers of varying widths. The side pads yield to incoming trucks/trailers to reduce the possibility of damage to the seal and/or building. The PS-700 has the sealing capability of a conventional foam seal. It forms a three-sided seal around the rear of the truck/trailer and still allows for complete and unobstructed access to the truck/trailer. The PS-700's Pentawing adjustable head curtain minimizes the potential for curtain damage. The Pentawing curtain adjusts to a wide range of truck/trailer heights. The head curtain is dropped into position on the top of the truck/trailer after it is in place at the dock.



### Specifications

L-Shape dock seal(s) to be Model PS-700 as manufactured by Pentlift Equipment Corporation to suit a door opening \_\_\_\_\_ wide x \_\_\_\_\_ high. Side pads to be \_\_\_\_\_ long x \_\_\_\_\_ projection, constructed of polyurethane foam bonded to a 2\"/>

Options: Wear Plates  
Bottom flap

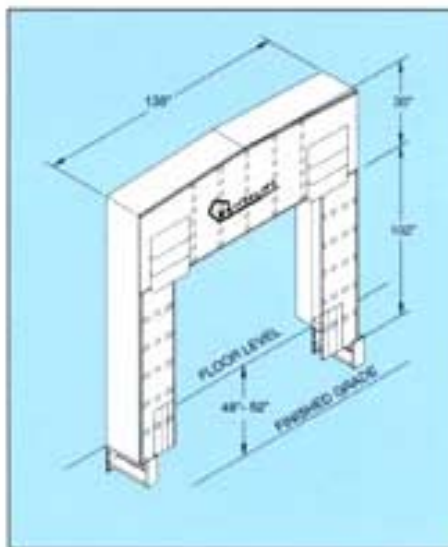
## PS-400 Rigid Truck Shelter



Suits door openings up to 12' wide x 12' high

### Features

The PS-400 Rigid truck shelter is designed to allow complete, unobstructed access to the rear of a truck/trailer for easier loading/unloading operations. The curtains of the shelter seal the top and sides of the trailer by exerting pressure through stays (fiberglass spring material) built into the top and side curtains. Standard units are supplied with bottom draft pads and heavy-duty structural steel protective guards.



### Specifications

Rigid Truck Shelter(s) to be Model PS-400 as manufactured by Pentlift Equipment Corporation to suit a door opening \_\_\_\_\_ wide x \_\_\_\_\_ high. Unit size to be \_\_\_\_\_ wide x \_\_\_\_\_ high x \_\_\_\_\_ projection. Unit's side and head frames to be manufactured using pressure treated lumber. Frame assemblies to have factory installed translucent panels. The head frame is to be raked to allow for side drainage. Fiberglass stays, heavy-duty structural steel protective guards, and bottom draft pads are to be supplied as standard. All curtains to have aluminum finishing angles on the outside edges. Inside leading edges of the curtains to have foam beads to seal against the truck/trailer. Header and side curtains to be manufactured from \_\_\_\_\_ fabric with double thickness, abrasion resistant, overlapping wear pleats at truck/trailer impact areas.

Options: Split header curtain  
Taper units  
Common member

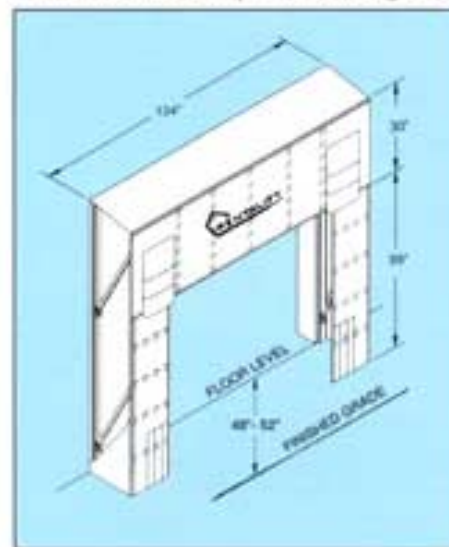
## PS-500 Retractable Truck Shelter



Suits door openings up to 12' wide x 12' high

### Features

The PS-500 Retractable truck shelter is best suited for facilities with large doors and where the entire truck/trailer door opening must be unobstructed. The PS-500 retractable truck shelter retracts upon impact from off-center trucks without sustaining damage. All metal components are aluminum to provide a clean, aesthetically pleasing look. The PS-500's structural members are custom-extruded tube made from aluminum, a corrosion resistant material which offers a superior strength-to-weight ratio. Fiberglass stays, which are built into the curtains, exert sufficient pressure to seal the top and sides of the truck/trailer once it is in position at the loading dock.



### Specifications

Retractable truck shelter(s) to be Model PS-500 as manufactured by Pentlift Equipment Corporation to suit door opening \_\_\_\_\_ wide x \_\_\_\_\_ high. Unit size to be \_\_\_\_\_ wide x \_\_\_\_\_ high x \_\_\_\_\_ projection. Unit to be manufactured using high strength aluminum components. All curtains to have aluminum finishing angles on the outside edges. Inside leading edges of the curtains to have foam beads to seal against the truck/trailer. Header and side curtains to be manufactured from \_\_\_\_\_ fabric with built in fiberglass stays. Unit to have double thickness, abrasion-resistant, overlapping wear pleats at truck/trailer impact areas.

Options: Bottom pads  
Split header curtain